

Analysis of the results of the EHU student survey on the assessment of the quality of education in the 2024/2025 academic year

Academic Support Centre



EHU European Humanities University

General information on the survey

Survey date:

31 July – 11 August 2025

22 September – 30 October 2025

Purpose of the survey:

To assess the quality of the university system as evaluated by students.

Summary of participants:

Questionnaires sent out – **1,114**

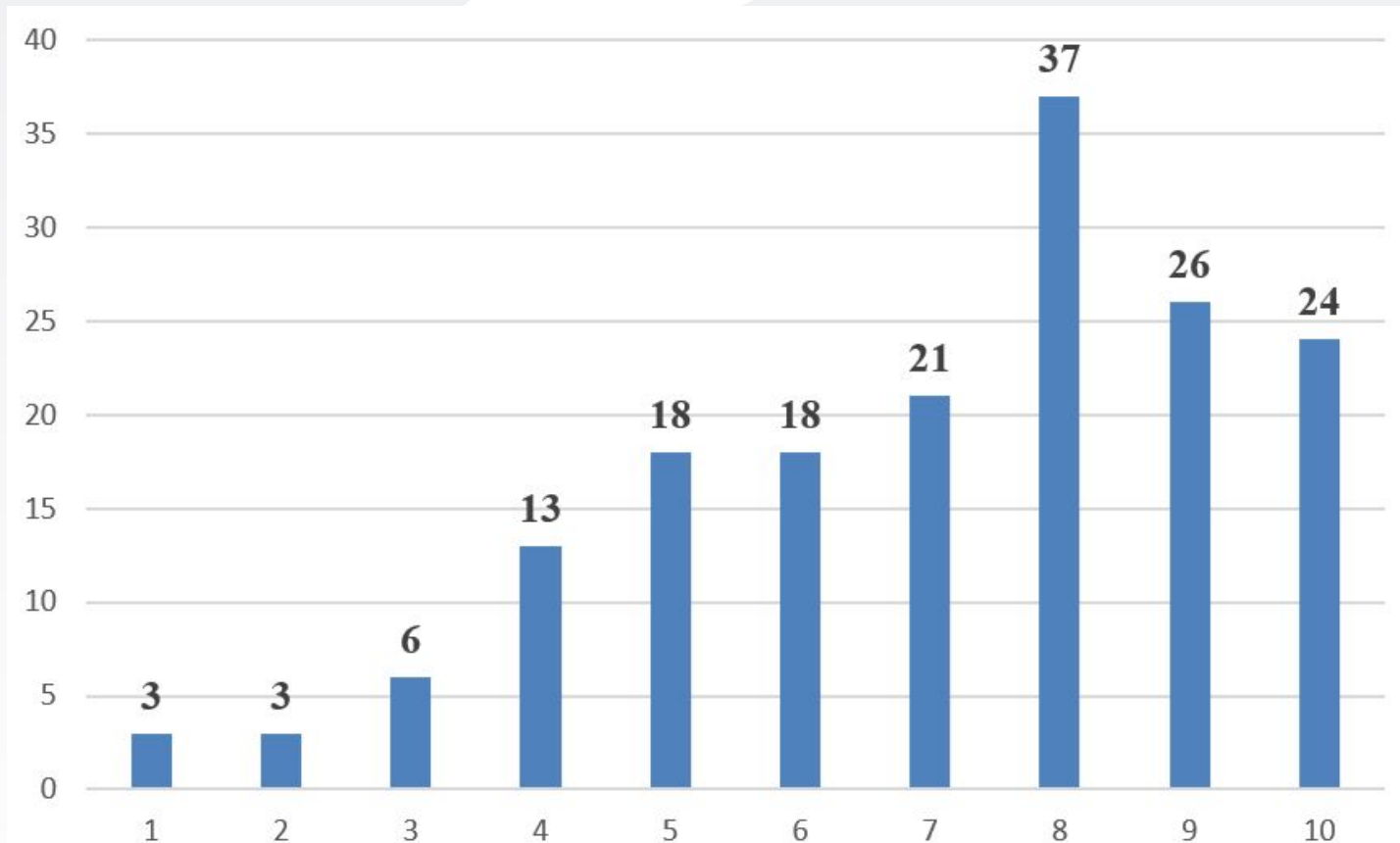
Questionnaires received from individual participants – **169**

Percentage of survey participants (of the total number of students) – **15.17%**

Overall average score for quality assessment – 7,3285

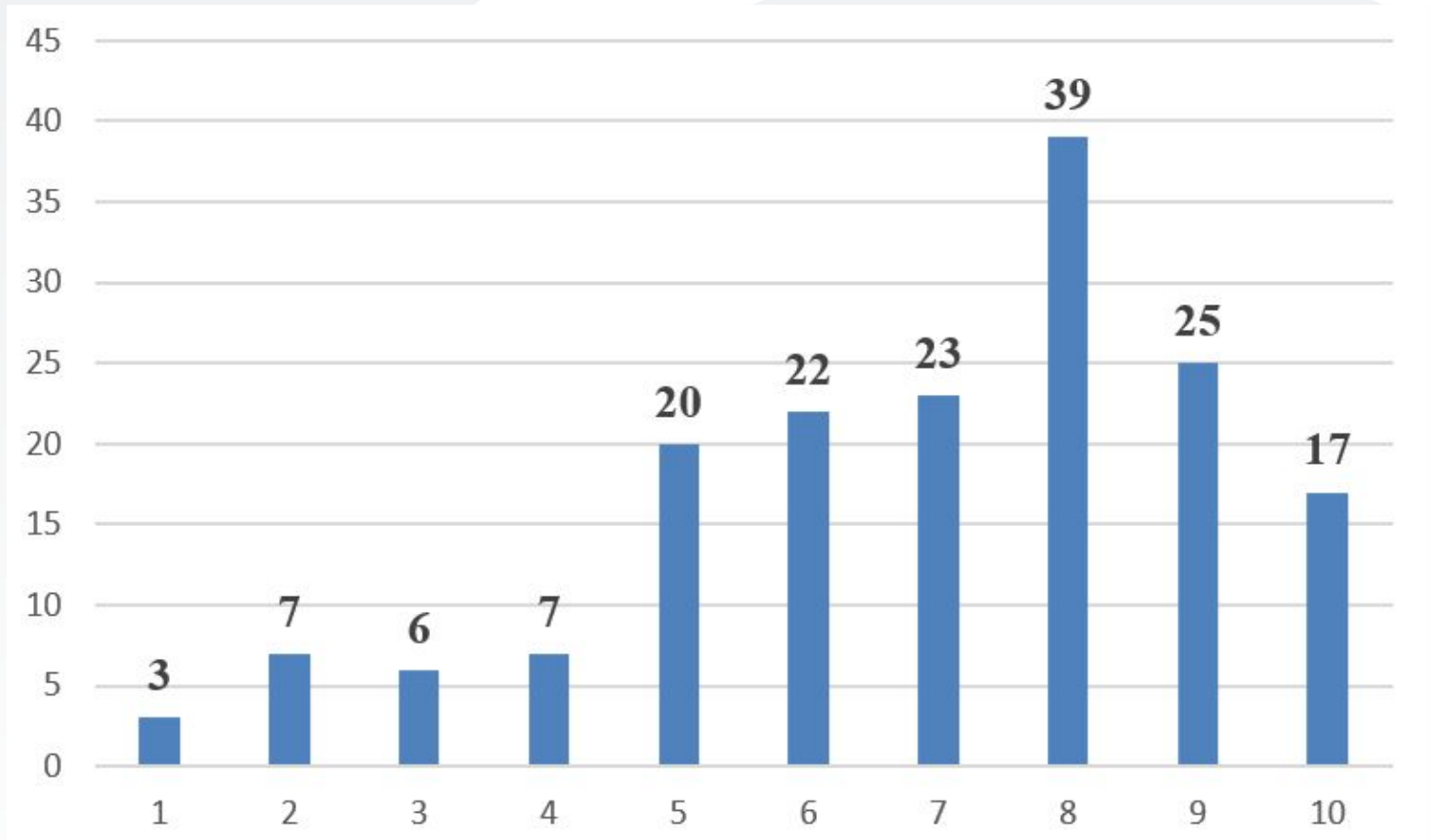


1. How satisfied are you with the information support of the educational process (study guide, academic calendar, etc.)?



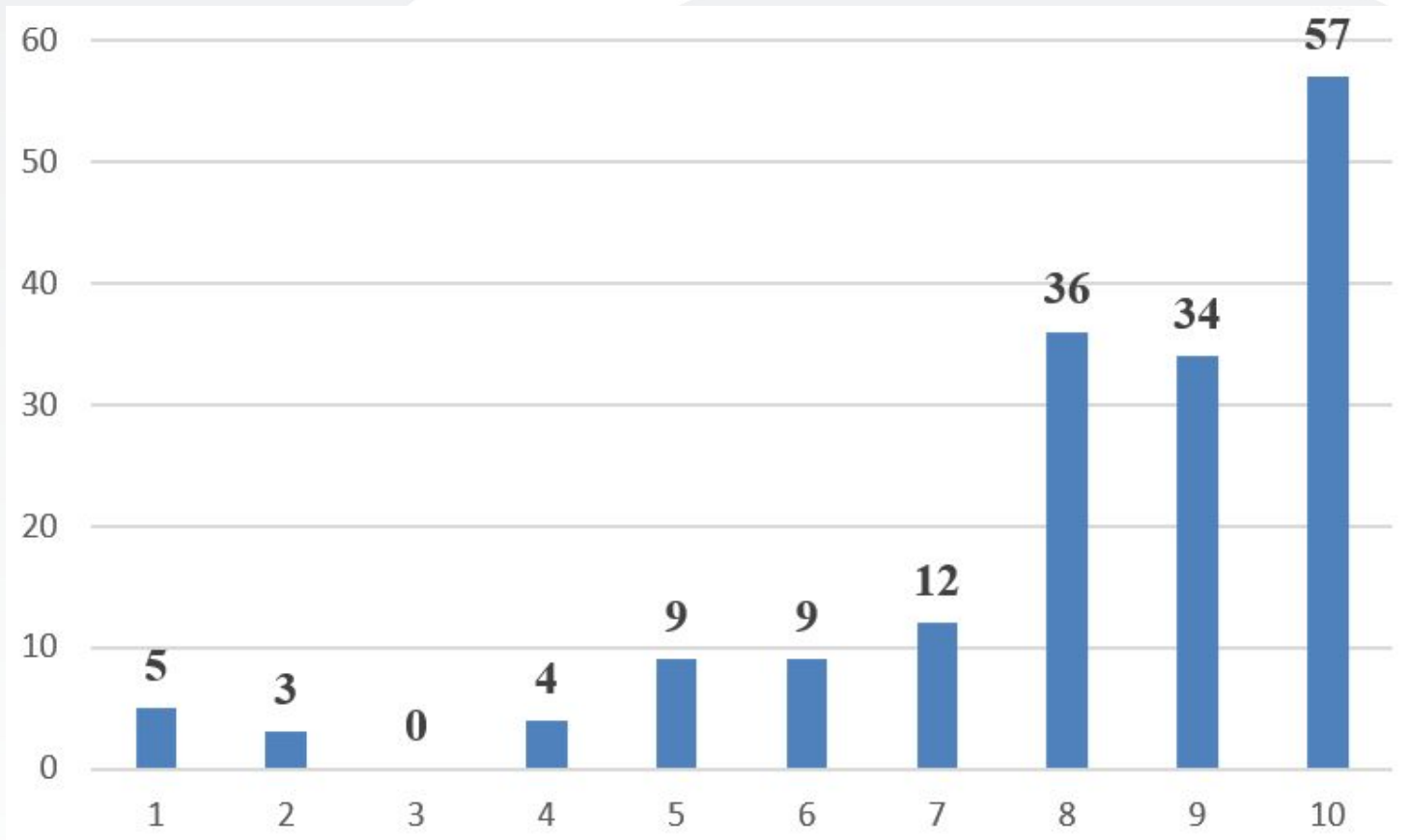
AVERAGE SCORE – **7.07**

2. What is your attitude toward the quality of the organization of the educational process (class schedules, internships, organization of consultations, etc.)?



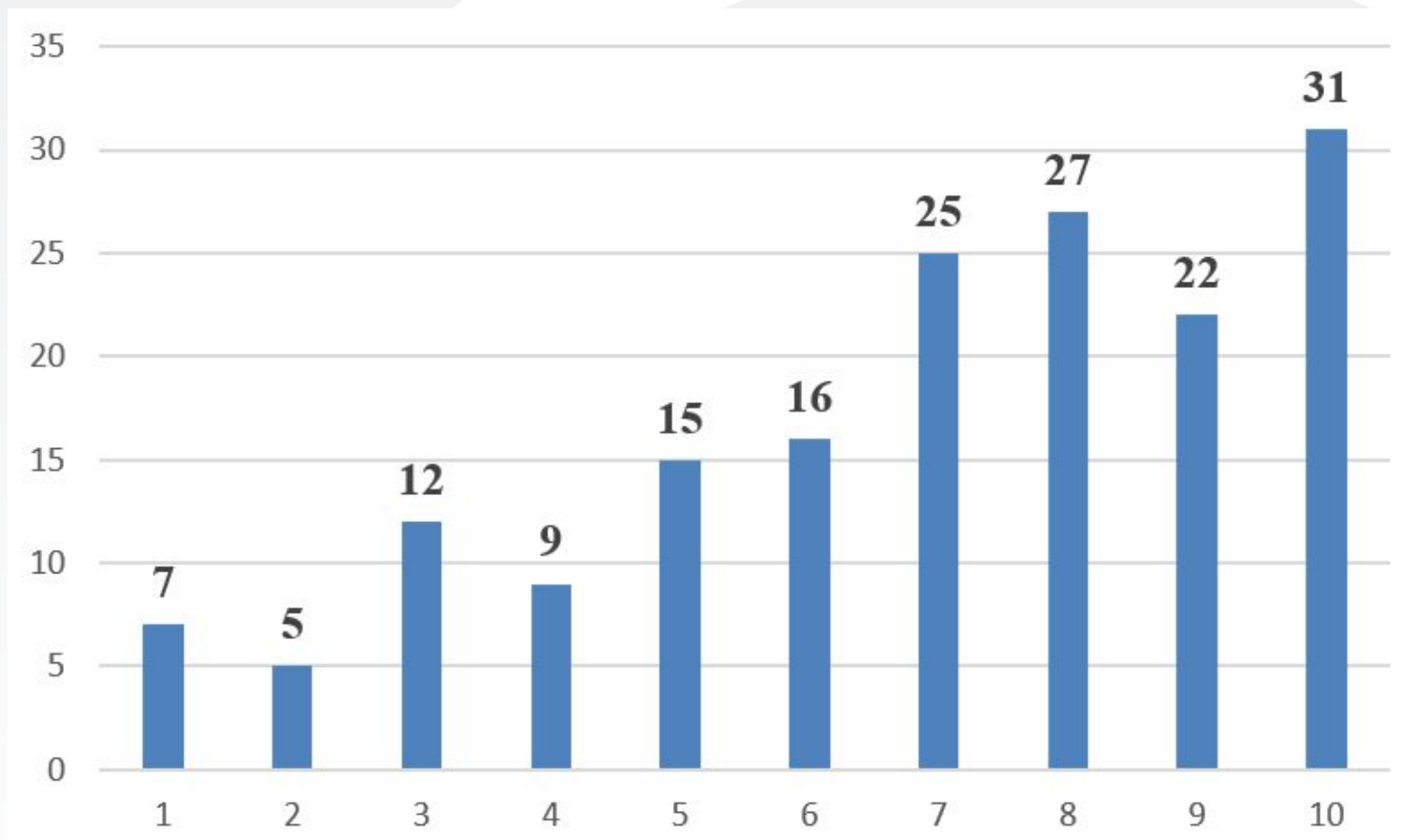
AVERAGE SCORE – **6,86**

3. Does the university administration inform you about student support opportunities (scholarships, cultural project competitions, etc.)?



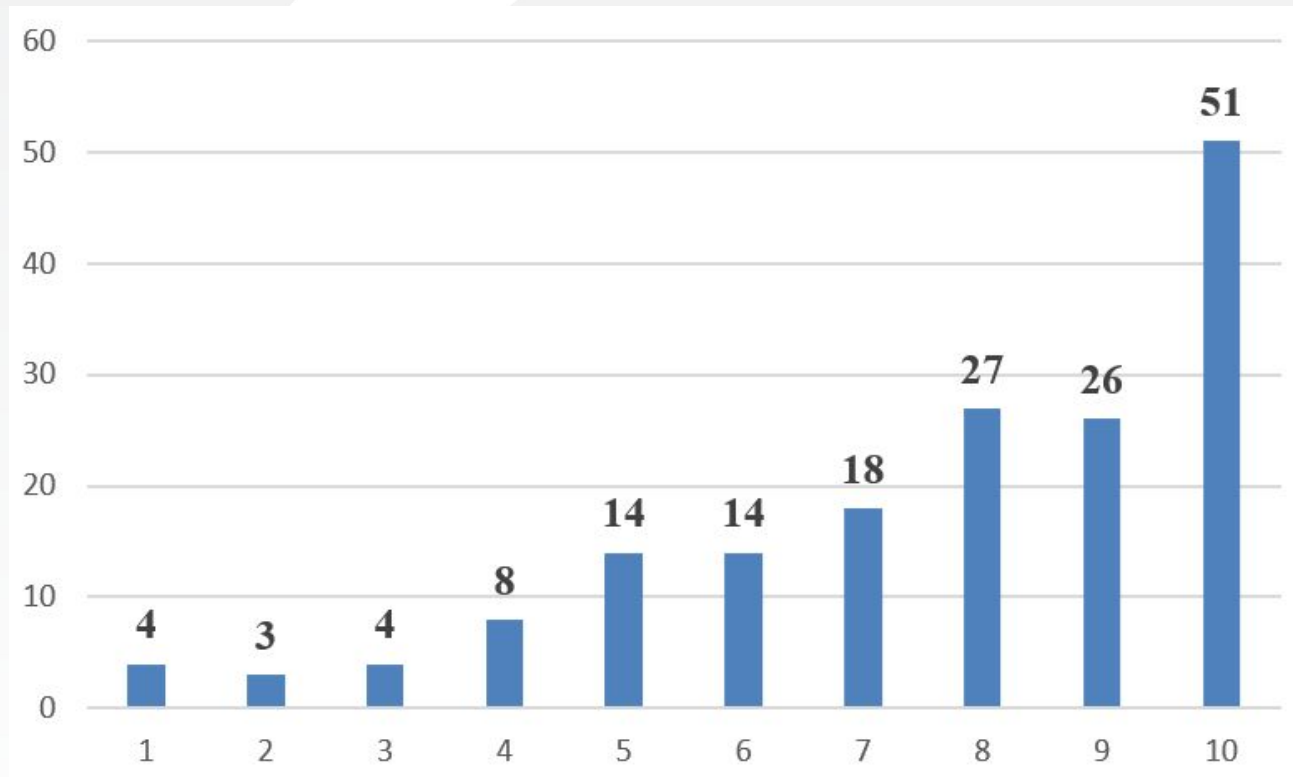
AVERAGE SCORE – 8.12

4. Are you satisfied with the way communication is organized with the academic and administrative structures of the university?



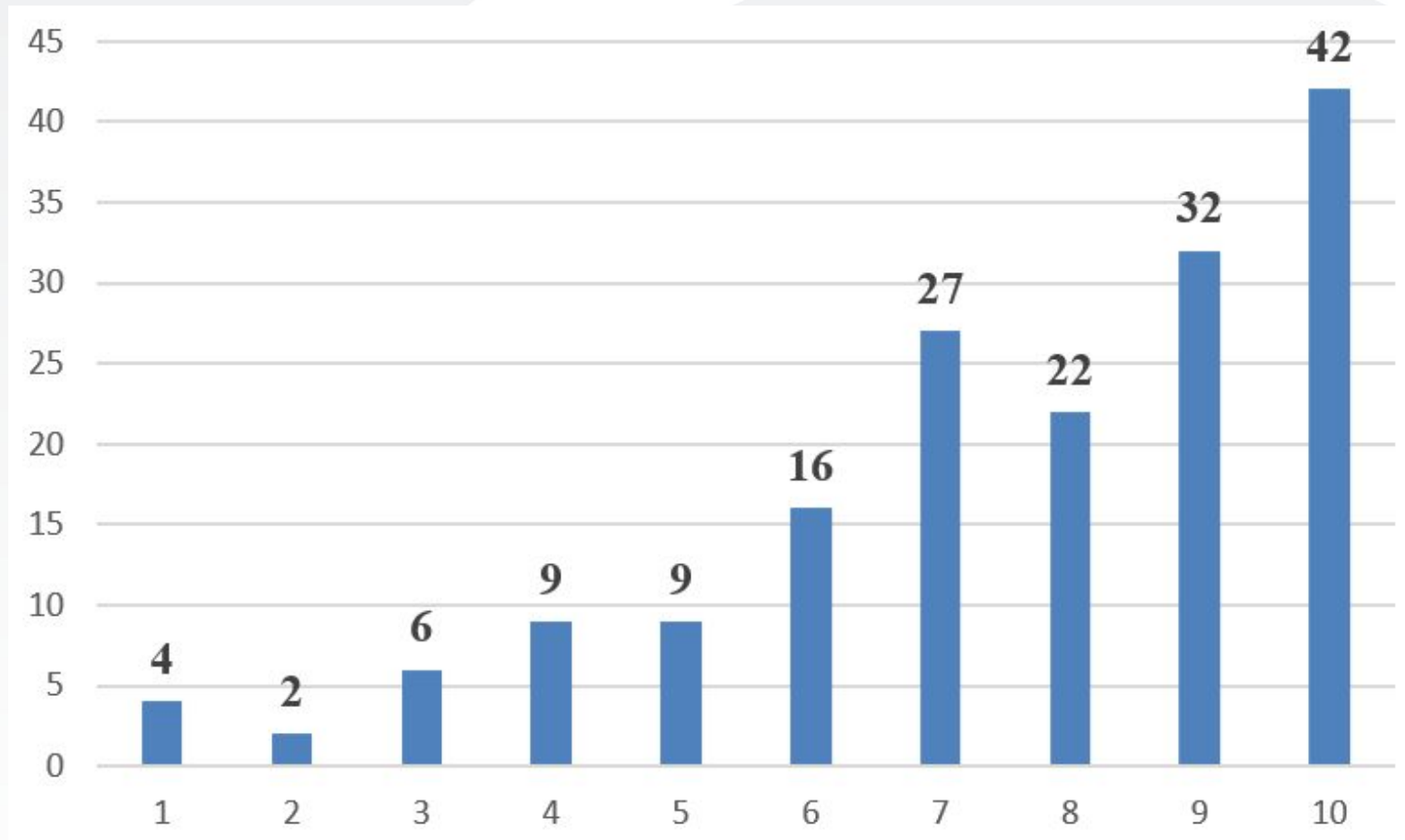
AVERAGE SCORE – 6,87

5. Satisfaction with the material and technical resources of the educational process: the condition of classrooms, the availability of modern information technologies (ability to work on a computer, access Internet resources, etc.)?



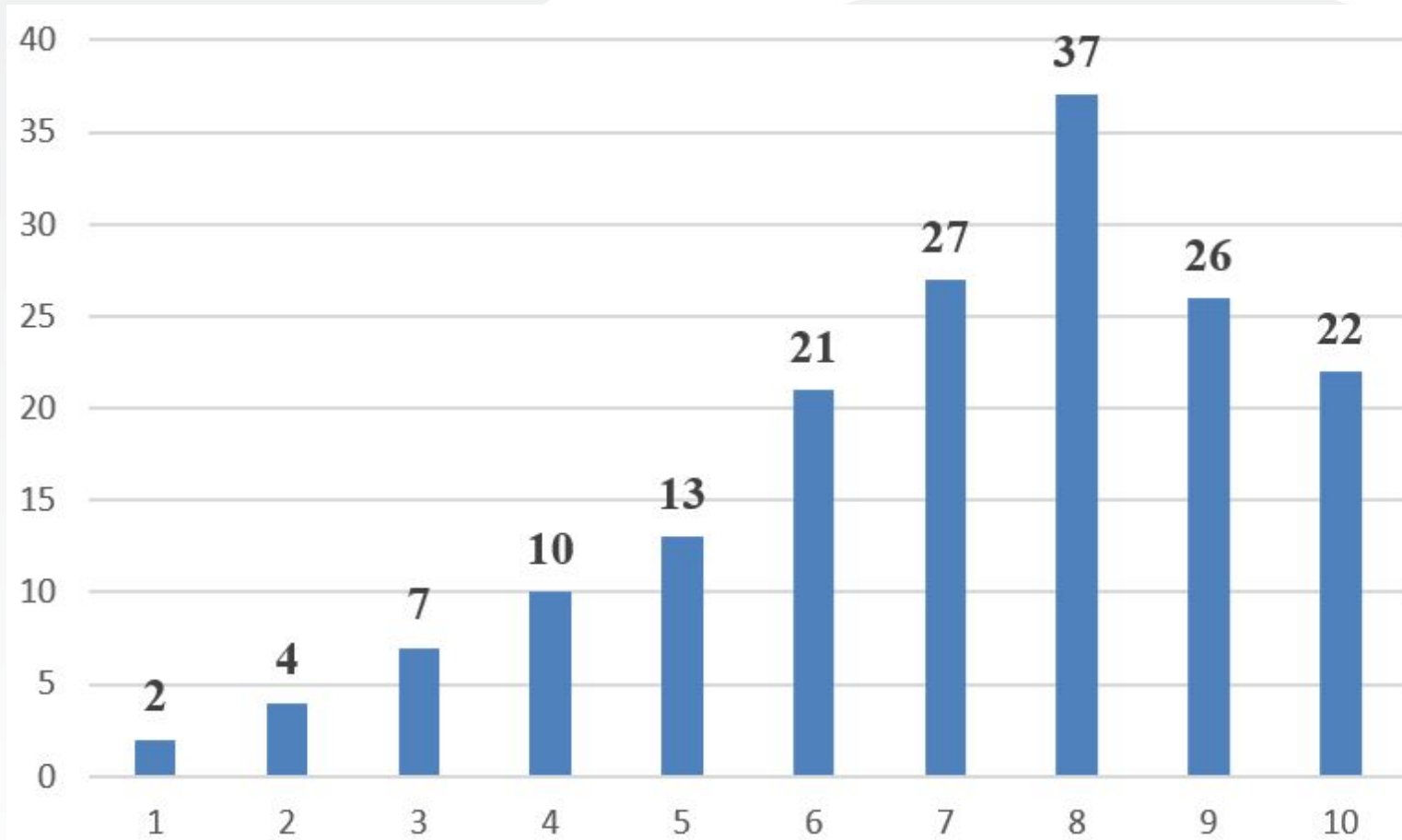
AVERAGE SCORE – 7,70

6. Participation in extracurricular university activities (volunteer work, support for university clubs, etc.)?



AVERAGE SCORE – 7,57

7. To what extent are you satisfied with the learning process at the university?



AVERAGE SCORE – **7.11**

Analysis of the results of the EHU student survey on the assessment of the quality of education in the 2024/2025 academic year

Academic Support Centre



EHU European Humanities University